

# Buildings of Summit Past and Present



JR  
974.936  
DUE

# REFERENCE

Written by Sheila G. Duetsch

Edited by Lynn Thompson and Loreli Stochaj

Pictures from the Summit Historical Society collection  
All other images from Google images

This publication was made possible by a grant from  
The Summit Educational Foundation to the Summit  
Historical Society

Copyright 2008

Permission must be obtained from the Summit Historical  
Society to copy any portions of their material

# Early Settlers

Summit was first called Dutchman's Gap. It lay between the gap of the Watchung Mountains and was settled by the Dutch.

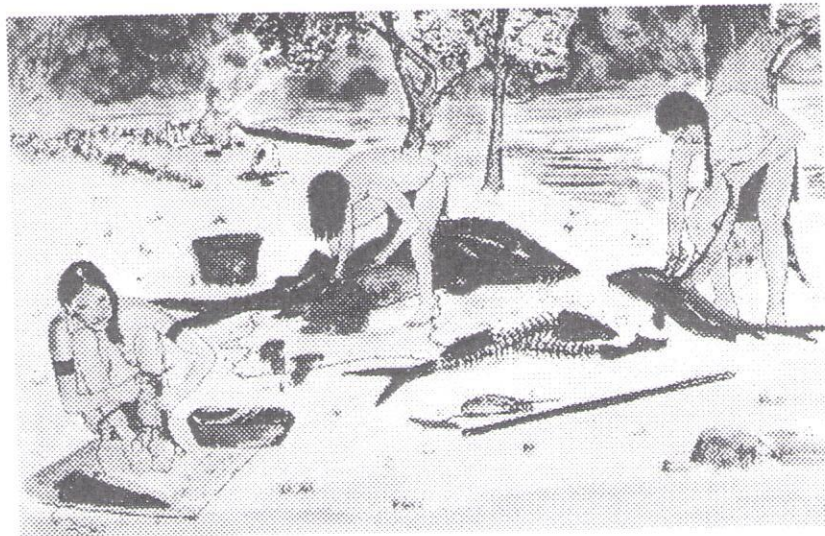
In 1741 Benjamin Carter built a house on the Passaic River. He was a farmer and needed water for his crops, for drinking, and for bathing. The Carter House still exists and has been moved to 90 Butler Parkway.

Another early settler was Jotham Potter, a wheelwright and a farmer. He owned most of the land which is now Union Place and Franklin Place.

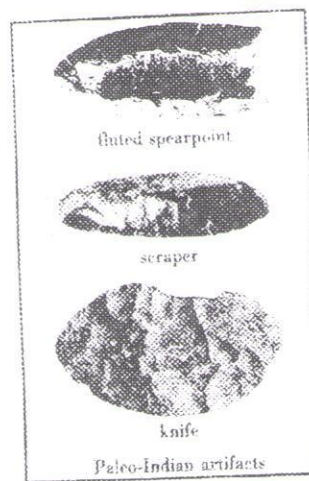


The Carter House

# The Lenape Indians



When Christopher Columbus discovered the New World in 1492 the Lenni Lenape Indians already lived in New Jersey. The Lenapes were part of the larger Delaware Indian tribe. In the Summit area the Lenapes lived mainly along the Passaic River and around Surprise Lake. Many relics have been dug up in both of these locations.

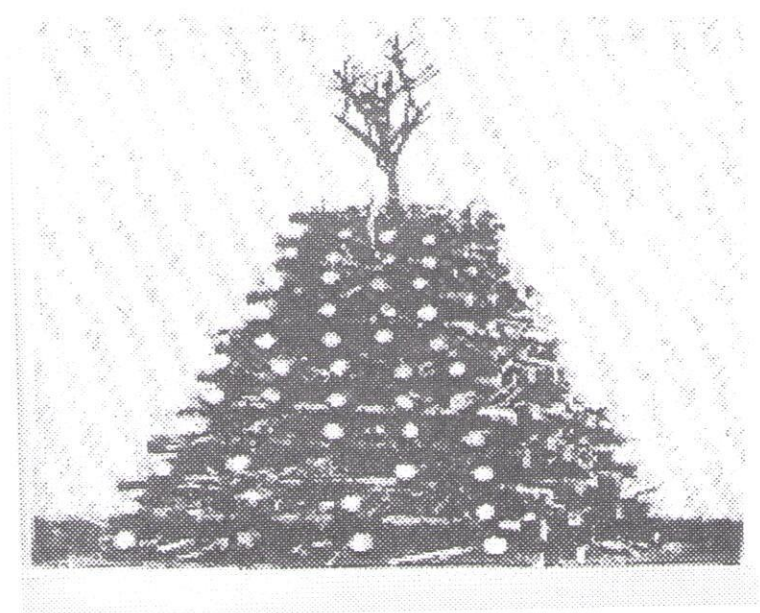


Route 24 was a major Indian trail. The Indians used it to go to the mountains to hunt and to the seashore to fish. They also collected sea shells for wampum beads.



# The Revolutionary War 1776

During the Revolutionary War, about twenty colonial soldiers were stationed at the top of Hobart Gap. They spied on the British troops by watching New York Harbor. They would signal George Washington in Morristown by building a log pyramid, stuffing it with dry leaves and setting it on fire. The pyramid was called a beacon. It would send flames and smoke into the sky for Washington to see. Summit was Beacon #10.



Summit Beacon #10

# The Railroad Brings People

## 1837

One of Benjamin Carter's nine children, Sarah, married Jonathan Crane Bonnell. Jonathan had a saw-mill to cut logs and a grist mill to grind grain.

When the tracks were laid for the new train, it was too hard to come up the hill to come into Summit. Jonathan offered to give some of his land free to the railroad company if they would come up the hill into Summit. And so it did.

For that, Jonathan Crane Bonnell is called "the father of Summit". More people came and the city began to grow.



Summit Train Station

# The First Store Keeper 1840

Mehitabel Bonnell married William Littell. They opened a grocery store on Maple Street next to the railroad tracks. They opened a second store on the corner of Maple Street and Union Place.

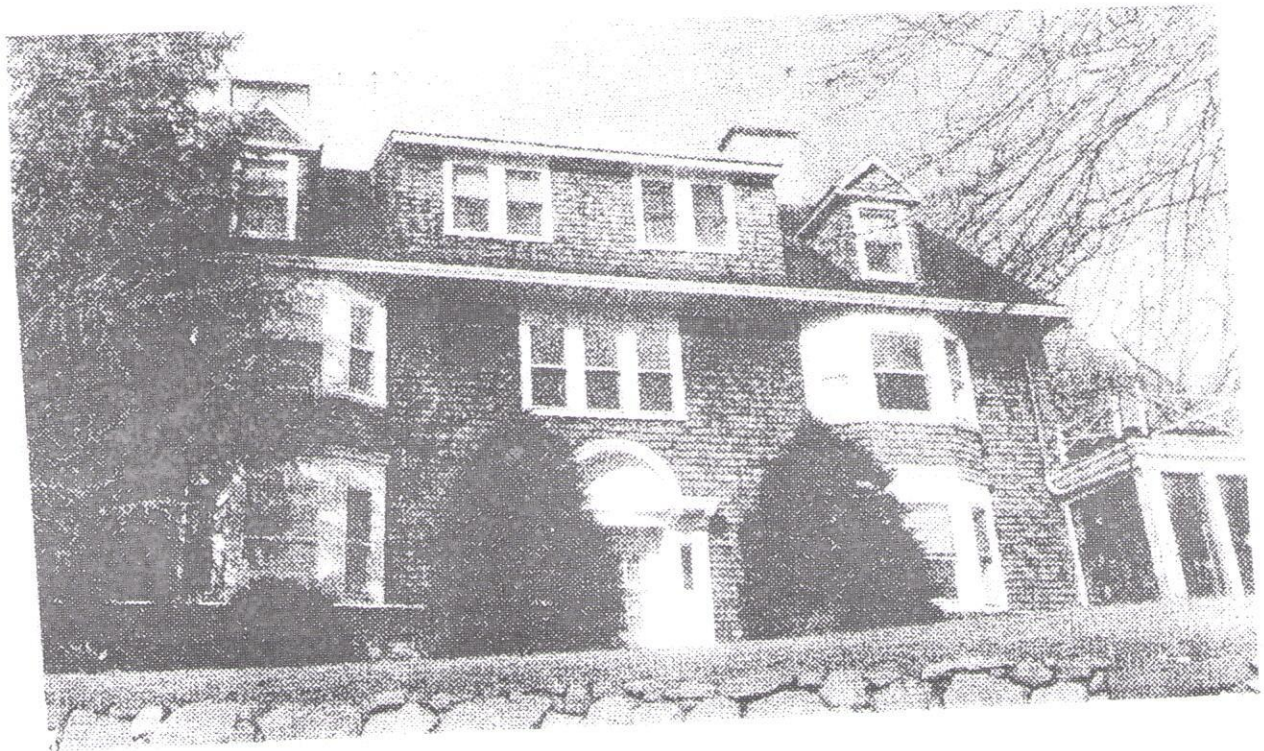


The Littell Grocery Store

# The Reeves Reed Arboretum

The Arboretum is at 165 Hobart Avenue. It was the home of the Wisner family and built in 1889. Later, it belonged to the Reeves-Reed families.

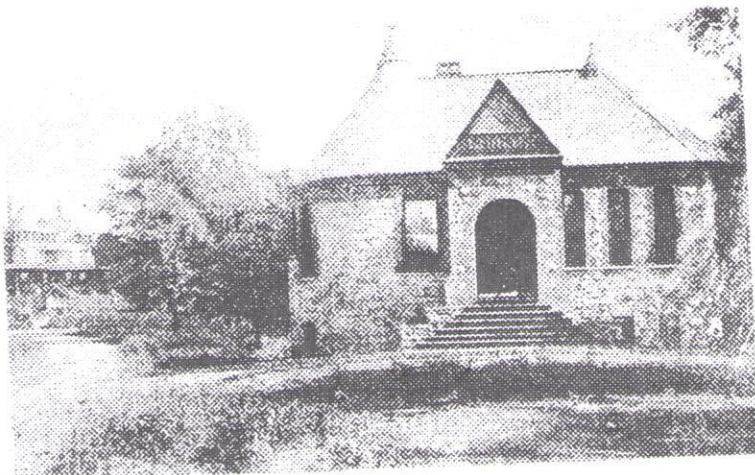
Today the Arboretum has 12 acres of woodland walks, flower beds and herb gardens. It has programs and classes for adults and children.



**The Wisner House**



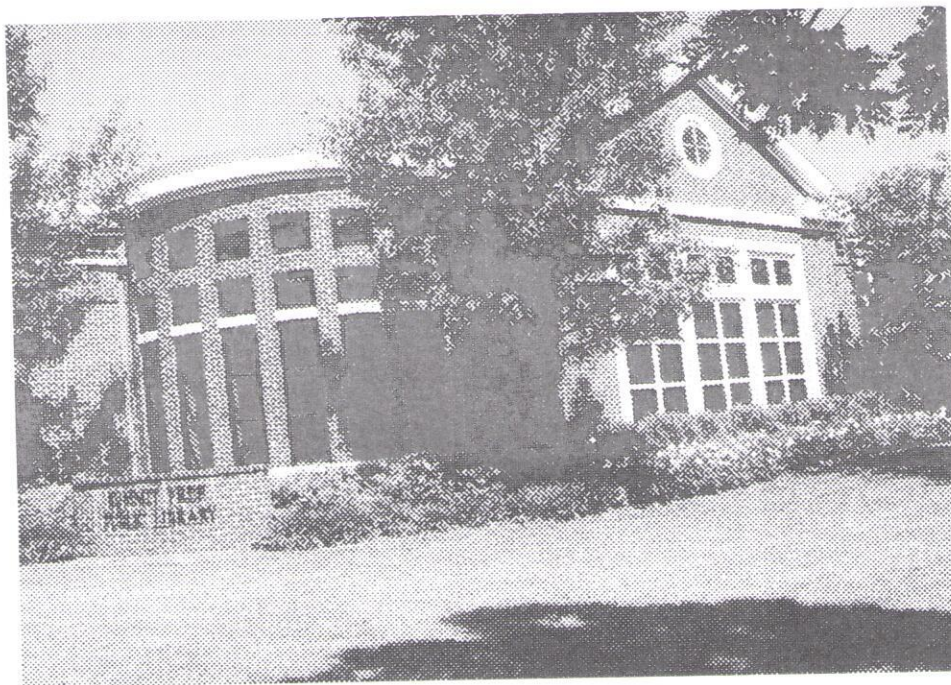
# Summit Library



**Summit Library 1891**

In 1891, the Library Association built Summit's first library. It was located on Locust Drive and New England Avenue. It was a free library open to all. The building was preserved and is now the Summit Playhouse.

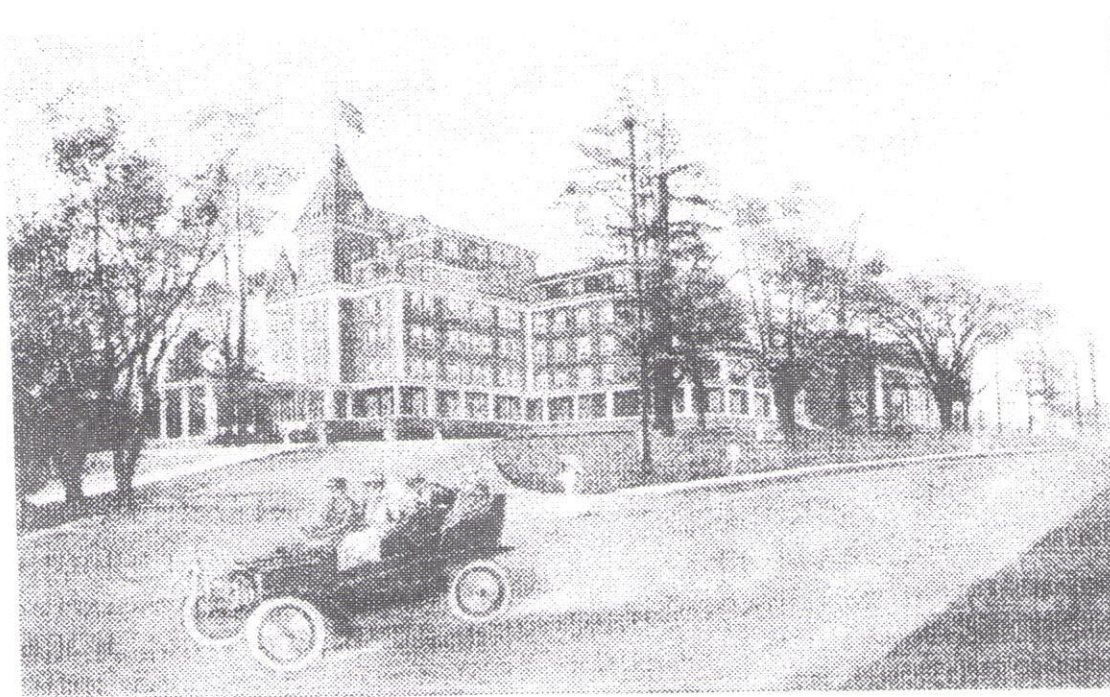
Today Summit has a modern library on Maple Street.



**Summit Free Public Library 2008**

# From Farms to a Resort

There were four hotels in Summit. The Beechwood Hotel was the largest. It was yellow and stood on the hill on DeForest Avenue and Beechwood Road. It had over 200 rooms, a roof garden, an elevator and 300 feet of front porches. Many people came to vacation in Summit because it was on top of a mountain and had lots of fresh air.

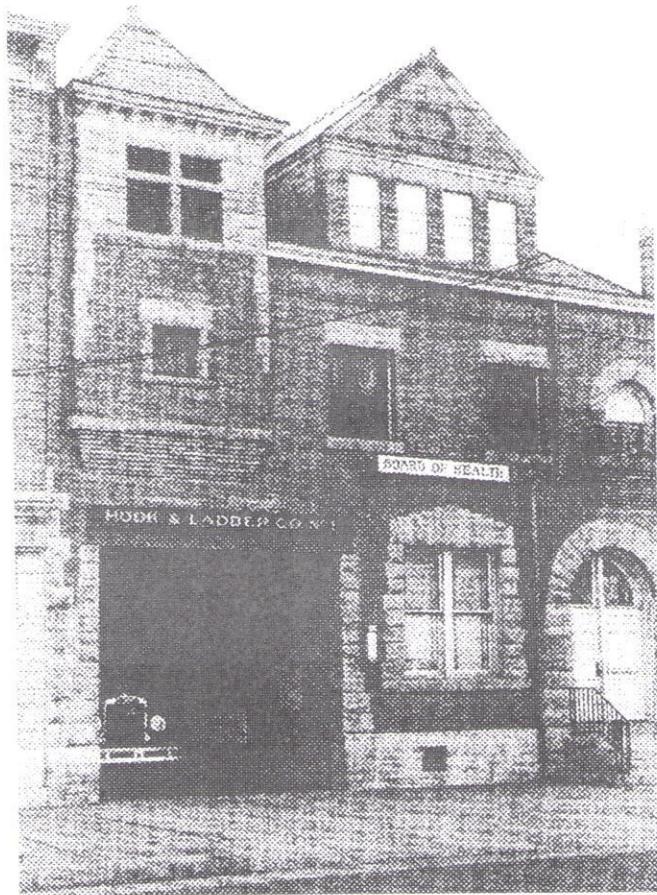


The Beechwood

The Beechwood Hotel

# A Town Hall 1892

In 1892, Summit needed and built a Town Hall at 71 Summit Avenue. The building had many uses. It had an office for the Town Clerk, the Board of Health, a jail, and on the second floor, a firemen's room. On the first floor, the firemen had a horse-drawn wagon, hose and chemical equipment. In the back of the building was a tower with a fire bell. That bell is now outside the present Fire Department on Broad Street.

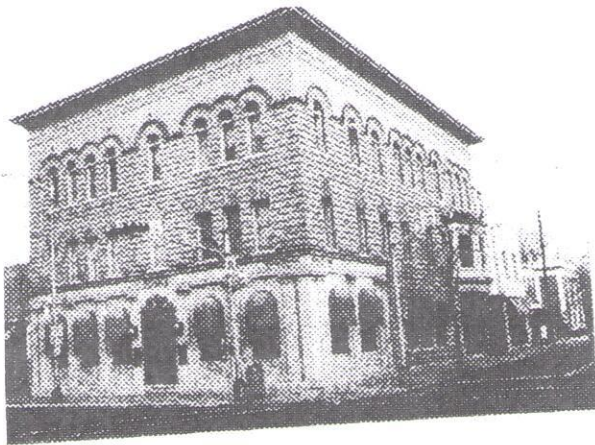


Summit Town Hall 1892

# The Post Office 1893

To send or receive mail, people would have to go to a local store. Finally, in 1893 the Post Office got its own building at 401 Springfield Avenue. The building later became Roots' Men's Store.

The Post Office is now a beautiful building at 61 Maple Street.



**Summit Post Office 1893**

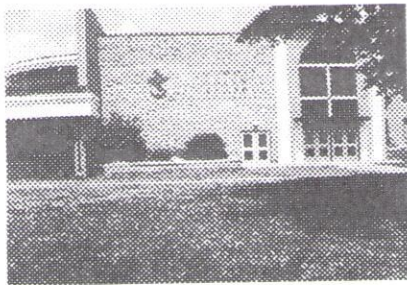


**Summit Post Office 2008**

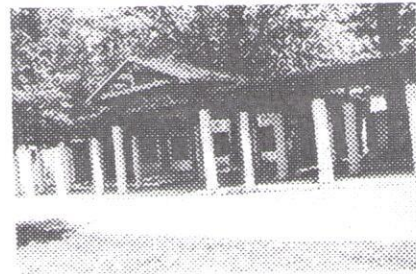
# Summit Schools

The Summit people always knew the importance of excellent schools. The very first school was built in 1792. It was the little red school house. The newest school is Wilson School on Beekman Terrace.

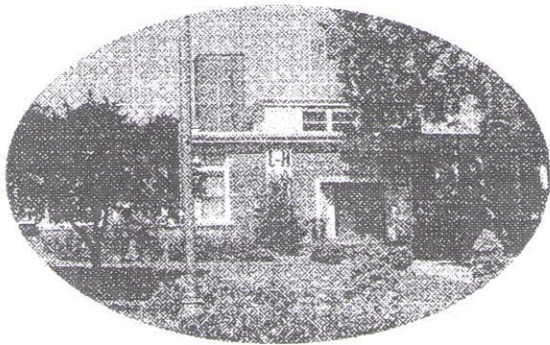
- 1792 The little red school house
- 1871 Deantown School-73 Park Avenue
- 1878 Public School No. 1-512 Springfield Avenue
- 1903 Public School No. 2(Roosevelt School) Park Avenue
- 1910 Lincoln School (rebuilt in 1953)
- 1911 Brayton School
- 1912 Washington School
- 1923 Senior High School (now the Middle School)
- 1927 Franklin School
- 1928 Junior High School
- 1931 Jefferson School
- 1938 Edison Junior High School
- 1959 Wilson School (Reopened as a Primary Center in 2008)
- 1962 New Summit High School



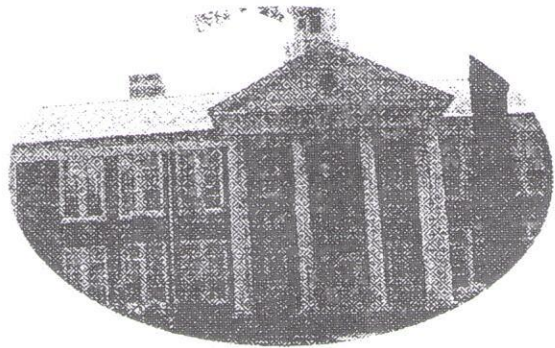
Summit High School



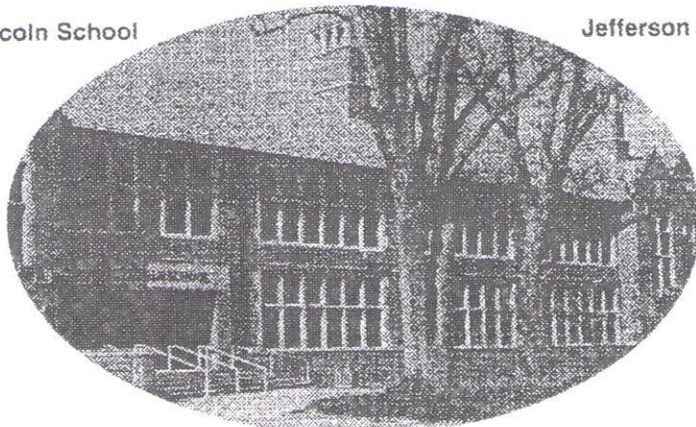
Wilson Primary Center



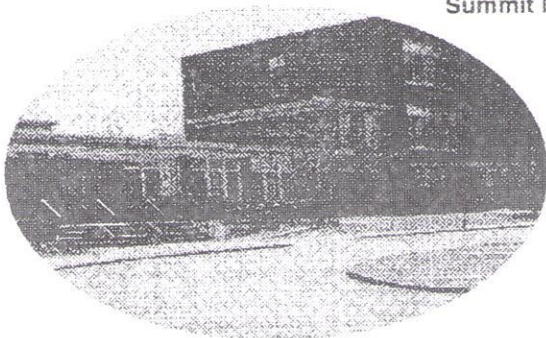
Lincoln School



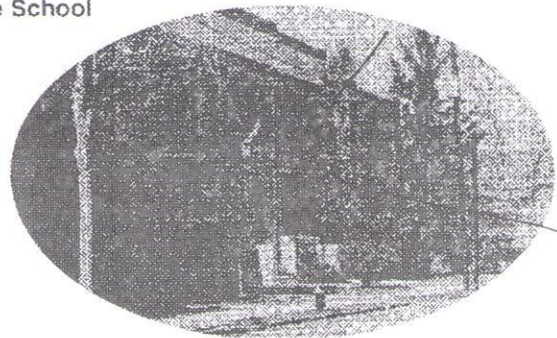
Jefferson School



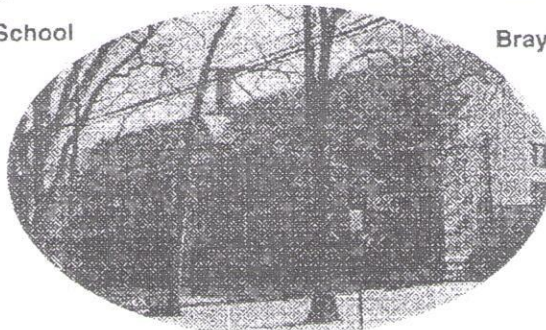
Summit Middle School



Washington School



Brayton School



Franklin School

# The Fire Department 1891

Summit's first fire company was formed in 1891. It was located at the Town Hall on Summit Avenue and had a horse drawn truck.

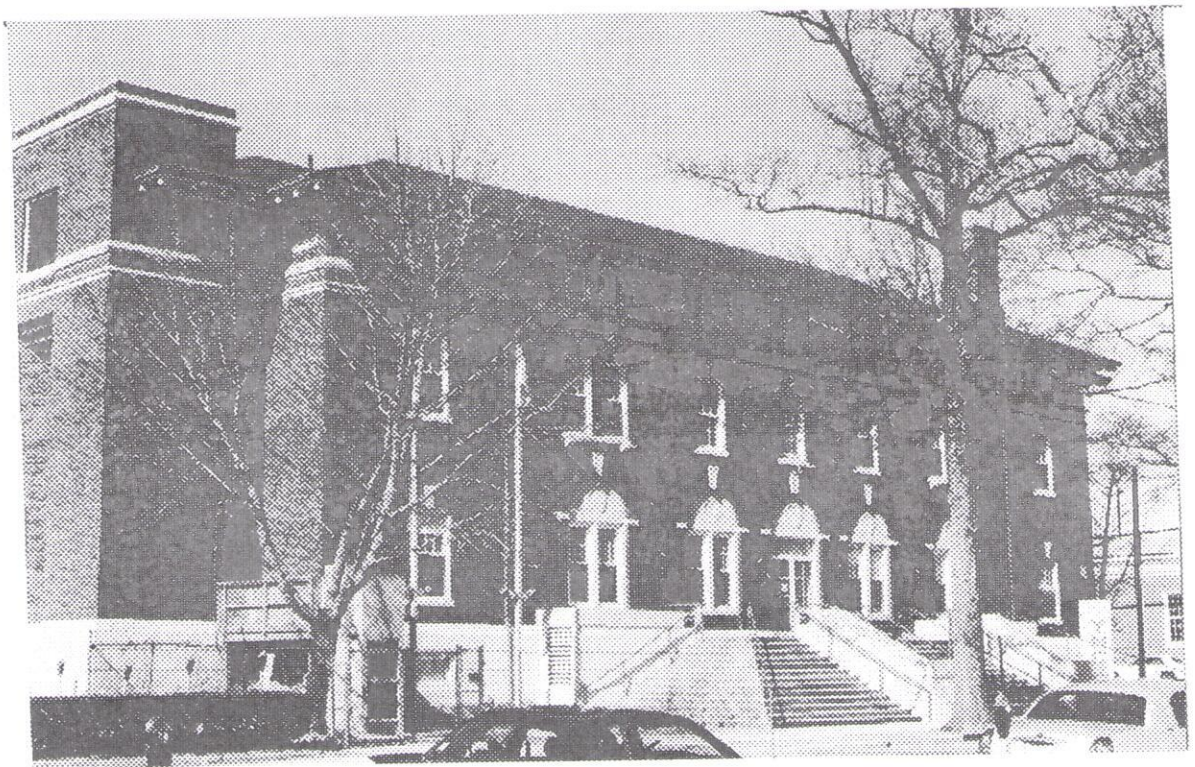
Now the Fire Department is at 396 Broad Street and has eight bays, offices, training facilities, a dormitory, kitchen and meeting rooms. There is a chief, a deputy chief, lieutenants, and 20 firefighters. There are firefighters on duty day and night to protect the city.



Summit Fire Department 2008

# The Y.M.C.A. 1912

The Y.M.C.A. was built in 1912 and located at 67 Maple Street. It has a swimming pool, gym, and exercise rooms. There are classes in fitness and swimming for all ages.



Summit YMCA



# The Police Department 1896

In 1896 there was one Captain and four patrolmen to protect the town. Today the Police Department is in the city hall and has one chief, one deputy chief, lieutenants, sergeants, and 25 patrol officers.

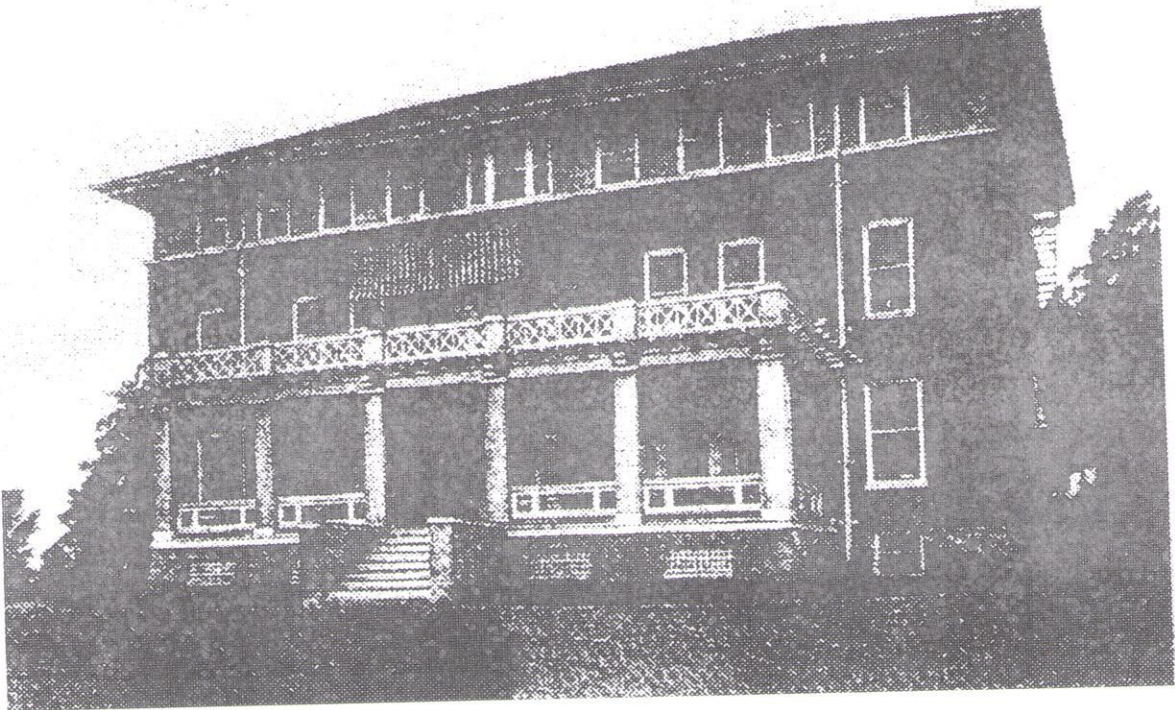
The Summit police wear a patch with the beacon on it.



Summit Police Department 2008

# Overlook Hospital 1906

In 1906 Dr. William H. Lawrence realized that Summit needed better care for its medical patients and he opened Overlook Hospital. It was a three-story building on Beauvoir Avenue and Morris Avenue. Today Overlook Hospital is part of the Atlantic Health System.



Overlook Hospital 1906

# Summit Volunteer First Aid Squad

The First Aid Squad was started in 1962. It provides medical help to Summit. It has three ambulances and over 100 volunteers. All services are free of charge.

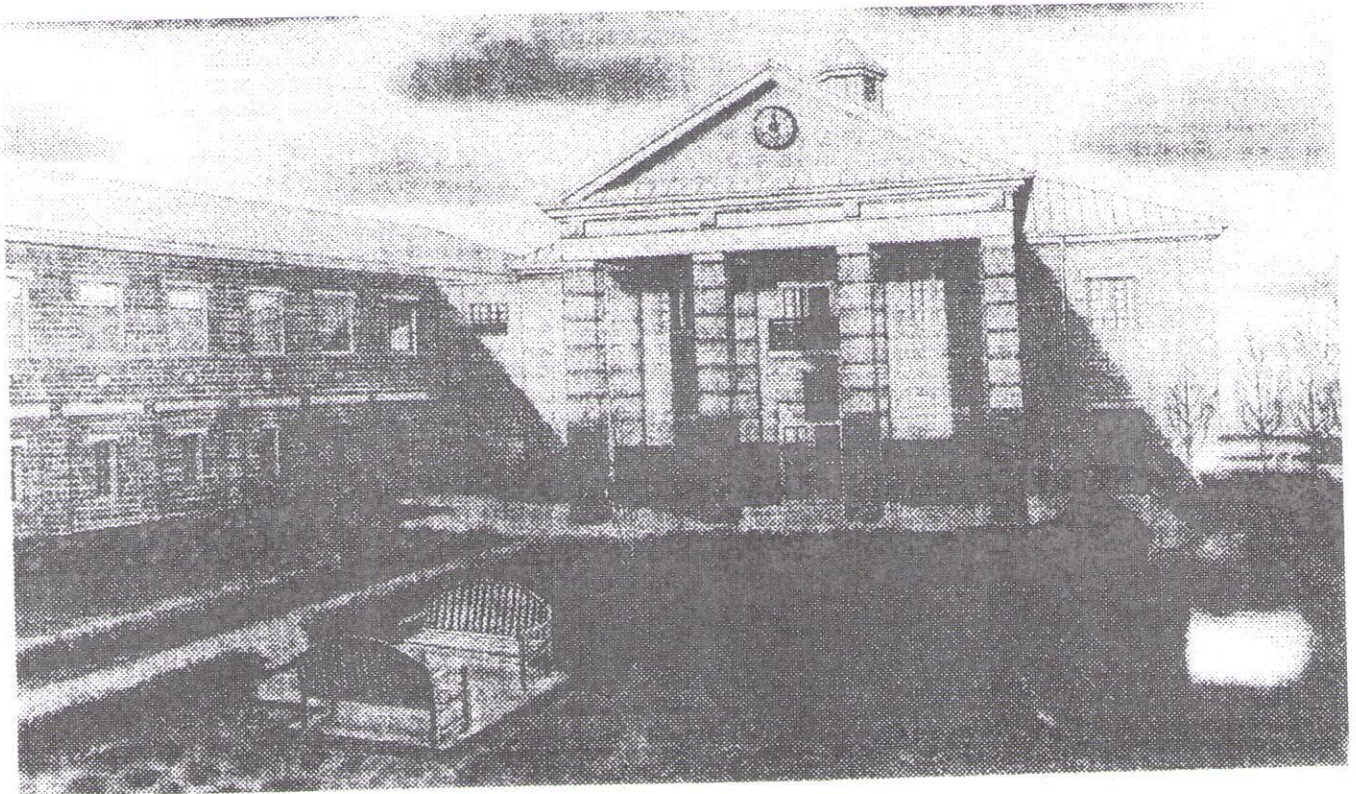


**Summit Volunteer First Aid Squad**

# Summit City Hall

A new City Hall was built in 1996. The offices needed to run the city are located there. Some of them are the Police Department, the Summit Court, and the Board of Health.

The address is 512 Springfield Avenue.



Summit Town Hall

# Glossary

- arboretum — *a place for the study of trees*
- bay — *a space for trucks or cars*
- beacon — *a signal of fire*
- chemical — *a substance used to study what things are made of*
- colonial — *referring to the time when there were only 13 colonies in the U.S.*
- dormitory — *a bedroom for several people*
- gap — *a break through a mountain*
- facilities — *rooms*
- harbor — *a part of a body of water deep enough  
For ships to anchor*
- local — *nearby*
- modern — *of the present time*
- patrol — *go around a place to see that everything  
is correct*
- preserved — *to keep in good shape*
- pyramid — *triangle shape with a wide base*
- relic — *something that has lasted a long time*
- wampum — *beads sometimes used for trading*
- wheelwright — *one who builds and repairs wheels*

# Buildings in this Book

The Carter House	90 Butler Parkway
Summit High School	125 Kent Place Boulevard
Wilson Primary Center	14 Beekman Terrace
Summit Middle School	272 Morris Avenue
Lincoln School	52 Woodland Avenue
Jefferson School	110 Ashwood Avenue
Brayton School	89 Tulip Street
Franklin School	136 Blackburn Road
Washington School	507 Morris Avenue
Railroad Station	Union Place
Littell Store	Maple St. and Union Place
Summit Playhouse	10 New England Avenue
Summit Public Library	75 Maple Street
First Town Hall	71 Summit Avenue
Fire Department	396 Broad Street
First Post Office	401 Springfield Avenue
Post Office	61 Maple Street
Police Department	512 Springfield Ave
Beechwood Hotel	(torn down)
Overlook Hospital	99 Beauvoir Avenue
Y.M.C.A.	67 Maple Street
Volunteer First Aid Squad	
City Hall	512 Springfield Avenue
Reeves Reed Arboretum	165 Hobart Avenue